



# MONTHLY MEMBERSHIP PROGRESS REPORT

District 410 B

Results as of: 08/31/2018

GMT: RASHMI KOOVERJEE

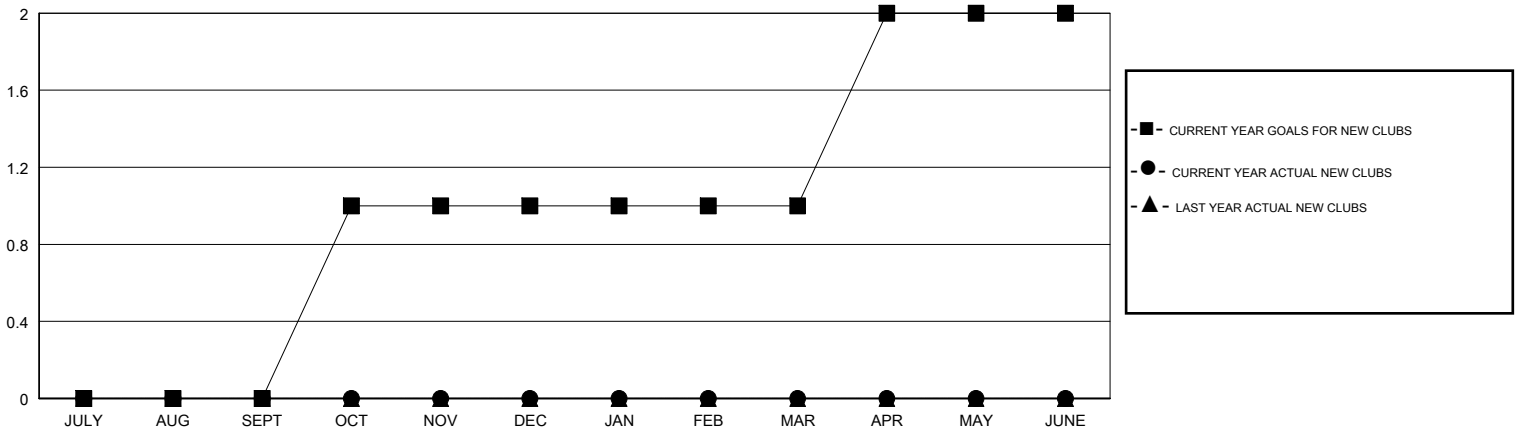
LOCATION REP OF SOUTH AFRICA

GMT CA

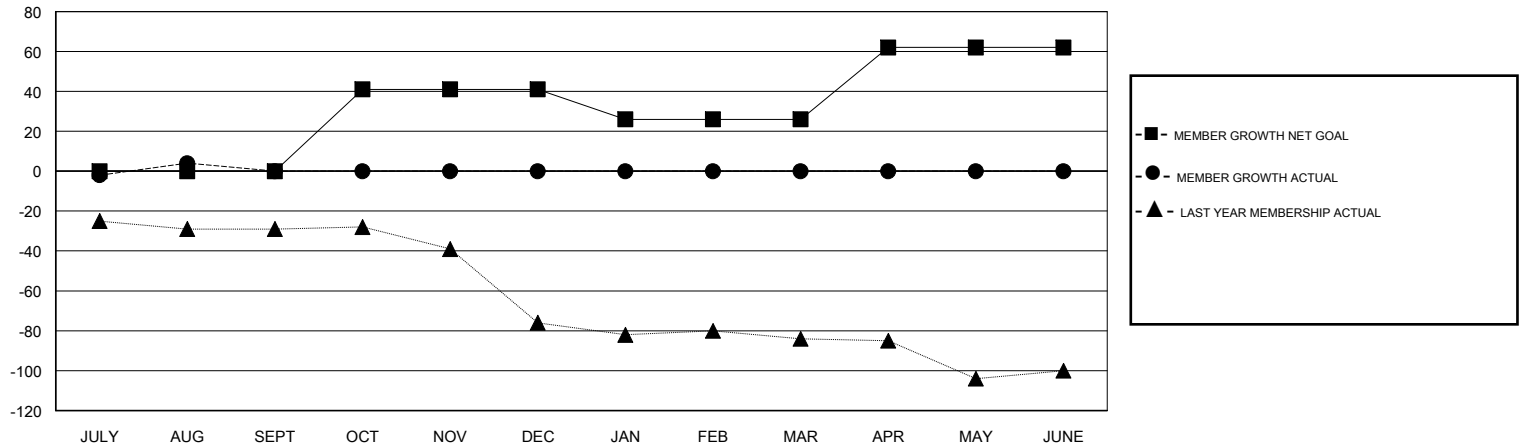
Clubs			
RESULTS FOR 2018-2019			
QUARTER	NEW CLUB GOAL	NEW CLUBS	DROPPED CLUBS
JULY/AUG/SEPT	0	0	0
OCT/NOV/DEC	1	0	0
JAN/FEB/MAR	0	0	0
APR/MAY/JUNE	1	0	0

Members			
RESULTS FOR 2018-2019			
QUARTER	MEMBER GROWTH NET GOAL	MEMBER GROWTH ACTUAL	DROPPED MEMBERS ACTUAL (including transfers)
JULY/AUG/SEPT	0	12	7
OCT/NOV/DEC	41	0	0
JAN/FEB/MAR	-15	0	0
APR/MAY/JUNE	36	0	0

GOALS AND ACTUAL NEW CLUBS CUMULATIVE



GOALS AND ACTUAL MEMBERS CUMULATIVE



DROPPED CLUBS: 0	4 CLUBS OF 37 ADDED 1 OR MORE NEW MEMBERS	<b>GENDER DISTRIBUTION</b> MALE 340 (52.71%) FEMALE 305 (47.29%) Women Percentage Fiscal Year Goal: 48%
DROPPED MEMBERS	<a href="#">CLICK HERE FOR CUMULATIVE MEMBERSHIP DATA</a>	TOTAL FAMILY UNIT MEMBERS 188
DECEASED 0		FAMILY MEMBERS PAYING HALF DUES 96
CLUB CANCELLED 0		
OTHER 7		
TOTAL 7		